

March 2024

The Nifty Hybrid Index series comprises 6 indices that blend Nifty 50 TR and aggregate fixed income indices in various proportions to reflect performance of hybrid portfolios investing in both asset classes.

### Index Characteristics

<b>Methodology</b>	Total Returns
<b>Base Date</b>	September 03, 2001
<b>Base Value</b>	1000
<b>Calculation Frequency</b>	Daily - End of day
<b>Weight Reset Frequency</b>	Monthly

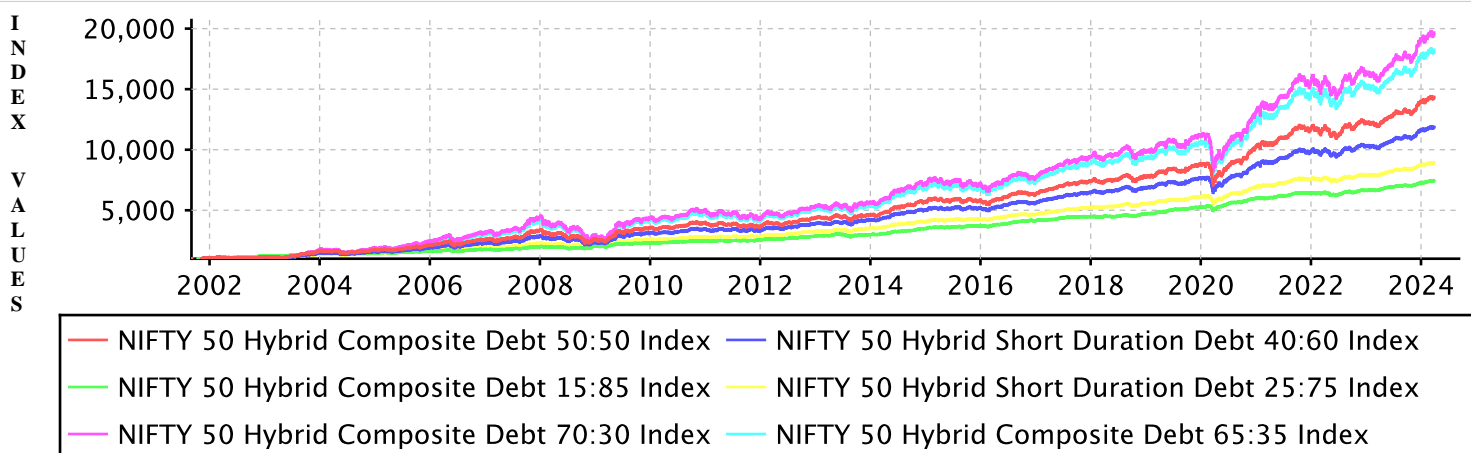
### Statistics

(Returns as on Mar 31, 2024)

Index Name	Weight to Equity Component	Weight to Debt Component	3 M	6 M	1 Yr.	3 Yr.	Since Inception
NIFTY 50 Hybrid Composite Debt 70:30 Index	70 %	30 %	2.81	11.16	23.28	13.20	14.10
NIFTY 50 Hybrid Composite Debt 65:35 Index	65 %	35 %	2.79	10.67	22.17	12.68	13.72
NIFTY 50 Hybrid Composite Debt 50:50 Index	50 %	50 %	2.74	9.20	18.87	11.09	12.52
NIFTY 50 Hybrid Composite Debt 15:85 Index	15 %	85 %	2.60	5.77	11.40	7.34	9.30
NIFTY 50 Hybrid Short Duration Debt 40:60 Index	40 %	60 %	2.29	7.82	16.19	9.92	11.58
NIFTY 50 Hybrid Short Duration Debt 25:75 Index	25 %	75 %	2.13	6.25	12.88	8.28	10.18

Note: Returns for periods longer than 1 year are annualized  
\*As on March 31, 2024

### NIFTY Hybrid Index Series



Disclaimer: All information contained herewith is provided for reference purpose only. NSE Indices ensures accuracy and reliability of the above information to the best of its endeavors. However, NSE Indices makes no warranty or representation as to the accuracy, completeness or reliability of any of the information contained herein and disclaim any and all liability whatsoever to any person for any damage or loss of any nature arising from or as a result of reliance on any of the information provided herein. The information contained in this document is not intended to provide any professional advice.

Contact us :

Email: [indices@nse.co.in](mailto:indices@nse.co.in) | Tel: +91 22 26598386 | Fax: +91 22 26598120