

March 28, 2025

The Nifty IT index captures the performance of the Indian IT companies. The Nifty IT Index comprises of 10 companies listed on the National Stock Exchange (NSE).

The Nifty IT index is computed using free float market capitalization method with a base date of Jan 1, 1996 indexed to a base value of 1000 wherein the level of the index reflects total free float market value of all the stocks in the index relative to a particular base market capitalization value. The base value of the index was revised from 1000 to 100 with effect from May 28, 2004.

Nifty IT Index can be used for a variety of purposes such as benchmarking fund portfolios, launching of index funds, ETFs and structured products.

Index Variant: Nifty IT Total Returns Index.

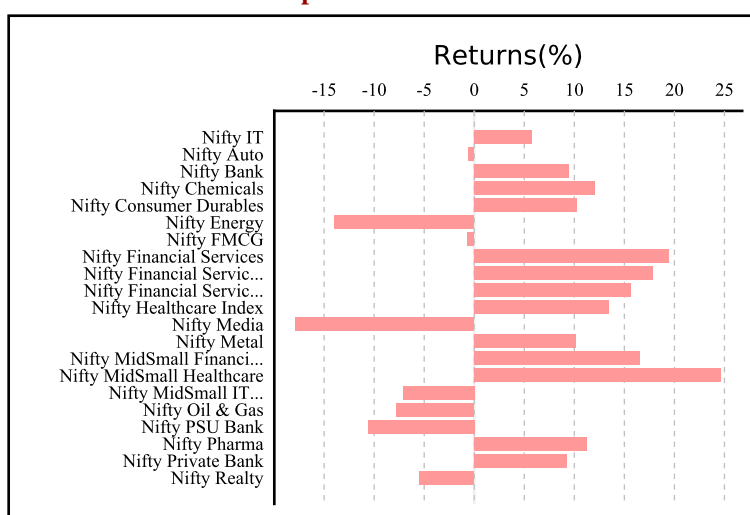
### Portfolio Characteristics

Methodology	Periodic Capped Free Float
No. of Constituents	10
Launch Date	
Base Date	January 01, 1996
Base Value	100
Calculation Frequency	Real-Time
Index Rebalancing	Semi-Annually

Index Returns (%) #	QTD	YTD	1 Year	5 Years	Since Inception
Price Return	-14.89	-14.89	5.70	23.65	22.39
Total Return	-14.40	-14.40	8.07	26.04	

Statistics ##	1 Year	5 Years	Since Inception
Std. Deviation *	20.07	22.01	33.16
Beta (NIFTY 50)	0.79	0.87	0.97
Correlation (NIFTY 50)	0.55	0.64	0.66

### 1 Year Performance Comparison of Sector Indices



### Fundamentals

P/E	P/B	Dividend Yield
27.87	7.64	2.81

### Top constituents by weightage

Company's Name	Weight(%)
Infosys Ltd.	27.68
Tata Consultancy Services Ltd.	23.39
HCL Technologies Ltd.	10.73
Tech Mahindra Ltd.	9.40
Wipro Ltd.	7.78
Persistent Systems Ltd.	6.13
Coforge Ltd.	5.64
LTIMindtree Ltd.	4.33
Mphasis Ltd.	2.97
Oracle Financial Services Software Ltd.	1.94

## Based on Price Return Index.

# QTD, YTD and 1 year returns are absolute returns. Returns for greater than one year are CAGR returns.

\* Average daily standard deviation annualised

Disclaimer: All information contained herewith is provided for reference purpose only. NSE Indices Limited (formerly known as India Index Services & Products Limited-IISL) ensures accuracy and reliability of the above information to the best of its endeavors. However, NSE Indices Limited makes no warranty or representation as to the accuracy, completeness or reliability of any of the information contained herein and disclaim any and all liability whatsoever to any person for any damage or loss of any nature arising from or as a result of reliance on any of the information provided herein. The information contained in this document is not intended to provide any professional advice.

March 28, 2025



### Index Methodology

Eligibility Criteria for Selection of Constituent Stocks:

- i. Companies should form part of Nifty 500 at the time of review. In case, the number of eligible stocks representing a particular sector within Nifty 500 falls below 10, then deficit number of stocks shall be selected from the universe of stocks ranked within top 800 based on both average daily turnover and average daily full market capitalisation based on previous six months period data used for index rebalancing of Nifty 500.
- ii. Companies should form a part of the IT sector.
- iii. The company's trading frequency should be at least 90% in the last six months.
- iv. The Company should have a minimum listing history of 1 month as on the cutoff date.
- v. Final selection of 10 companies shall be done based on the free-float market capitalization. A preference shall be given to companies that are available for trading in NSE's Futures & Options segment at the time of final selection.
- vi. Weightage of each stock in the index is calculated based on its free-float market capitalization such that no single stock shall be more than 33% and weightage of top 3 stocks cumulatively shall not be more than 62% at the time of rebalancing.

Index Re-Balancing:

Index is re-balanced on semi-annual basis. The cut-off date is January 31 and July 31 of each year, i.e. For semi-annual review of indices, average data for six months ending the cut-off date is considered. Four weeks prior notice is given to market from the date of change.

Index Governance:

A professional team manages all NSE indices. There is a three-tier governance structure comprising the Board of Directors of NSE Indices Limited, the Index Advisory Committee (Equity) and the Index Maintenance Sub-Committee.

### Key Indices

Broad Market Indices	Sectoral Indices	Thematic Indices	Strategy Indices	Fixed Income
Nifty 50	Nifty Bank	Nifty CPSE	Nifty100 Equal Weight	Nifty 10 yr Benchmark G-Sec
Nifty Next 50	Nifty IT	Nifty Commodities	Nifty50 PR 1x Inverse	Nifty 8-13 yr G-Sec
Nifty 100	Nifty PSU Bank	Nifty Energy	Nifty50 PR 2x Leverage	Nifty 4-8 yr G-Sec
Nifty 200	Nifty FMCG	Nifty Shariah 25	Nifty50 Value 20	Nifty 11-15 yr G-Sec
Nifty 500	Nifty Private Bank	Nifty 100 Liquid15	Nifty100 Quality 30	Nifty 15 yr and above G-Sec
Nifty Midcap 50	Nifty Metal	Nifty Infrastructure	Nifty Low Volatility 50	Nifty Composite G-Sec
Nifty Midcap 100	Nifty Financial Services	Nifty Corporate Group	Nifty Alpha 50	Nifty 1D Rate

#### Contact Us:

Email: [indices@nse.co.in](mailto:indices@nse.co.in) | Tel: +91 22 26598386 | Fax: +91 22 26598120

Learn more at: [www.niftyindices.com](http://www.niftyindices.com)

Bloomberg - NSEIT Index

Thomson Reuters - .NIFTYIT